



**[www.angelg.org.au](http://www.angelg.org.au)**  
**[melissa.gibbs@acelg.org.au](mailto:melissa.gibbs@acelg.org.au)**

# Background

- PM announced funding support for a Centre of Excellence at the Australian Council of Local Government (ACLG) meeting in November 2008
- The request for Application document issued by the Department of Infrastructure, Transport, Regional Development and Local Government (DITRD LG) stated:

*The Centre should assist local government to achieve a leading role in policy debates, a nationally co-ordinated approach to training and development and to become an employer of choice*

# Overview

- ACELG consortium:
  - ~ UTS Centre for Local Government
  - ~ University of Canberra
  - ~ Australia and New Zealand School of Government (ANZSOG)
  - ~ LGMA National
  - ~ IPWEA National
- Program Partners:
  - Australian National University
  - Charles Darwin University
  - Edith Cowan University
- Inaugural Board meeting held 1 October
- ACELG officially launched by Minister Albanese on 14 December
- \$8m Federal endowment for a minimum five-year operations
- Cash budget \$11.5m from all sources over five years.

# Overview (continued)

- Not a research institute - it must have a practical focus
- Not a representative body or professional institute
- Will not duplicate or compete with existing activities
- Project plan finalised, endorsed by the Board and launched by Minister in December
- High level consultation with state associations, professional institutes and State Government departments of local government late 2009
- More specific program consultations currently underway

# ACELG Board

- Hon Margaret Reynolds (Chair)
- Cr Geoff Lake (ALGA)
- Ms Stephanie Foster (DITRDLG)
- Prof Attila Brungs, Deputy VC, UTS
- Prof John H Howard, Pro VC, UC
- Prof Peter Allen, ANZSOG
- Ms Penny Holloway, LGMA National
- Mr John Truman, IPWEA National

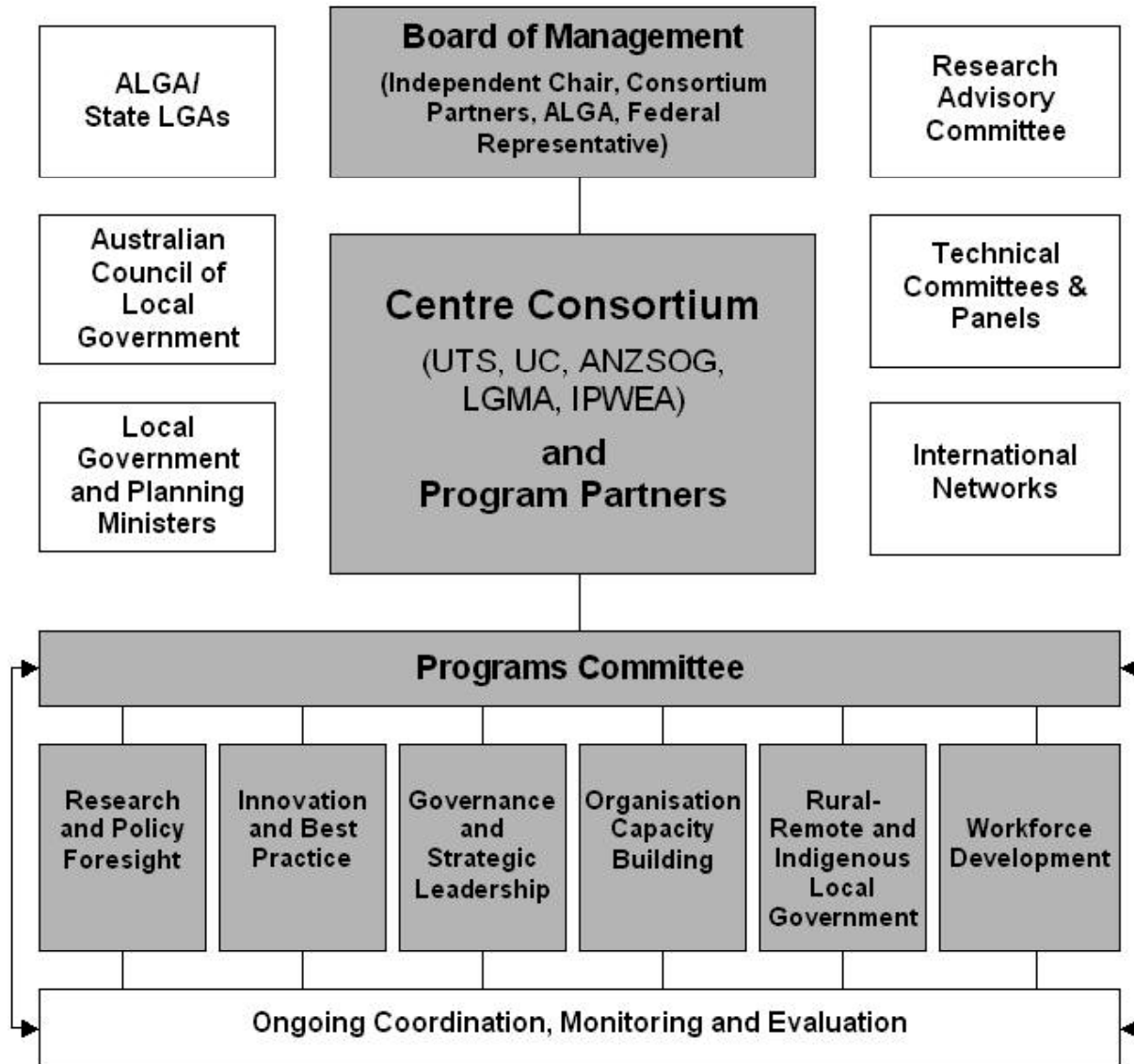
# The brief

- Showcase innovation and best practice across local government
- Encourage the adoption of innovative practices and solutions
- Specific focus on financial planning and asset management
- Assist local government to achieve a leading role in policy debates
- Nationally co-ordinated approach to training and development
- Local government as an employer of choice

# Guiding principles

- The Centre must be grounded in and serve the local government system: it should not be an outsider, academic organisation
- The Centre should focus on adding value, filling gaps and seeding new initiatives: it should not compete with existing programs
- Given limited resources, the Centre must focus on a limited number of strategic interventions

# Governance and program framework





# Some year one priorities

- ANZSOG Excellence in LG Leadership Program
- New national Emerging Leaders Program
- National Local Government Skills Forum
- Local Government Workforce Development Blueprint
- Guidelines on Asset Management for Small Communities
- Assessment framework to measure progress in improving asset management and long term financial planning
- National strategy to address capacity building needs of small rural remote and indigenous local governments
- Innovation and Knowledge Exchange Network and website
- Revamped LGMA Management Challenge with a focus on women's participation in local government
- A gender equity accreditation and awards program with ALGWA
- Upgraded Business Excellence Framework for LG
- New national research and policy program
- Development of national minimum datasets

# Further contact

Melissa Gibbs

0412 647 233

[melissa.gibbs@acelg.org.au](mailto:melissa.gibbs@acelg.org.au)

[www.acelg.org.au](http://www.acelg.org.au) (temporary website)