

Regional Statistics for Local Government

Lisa Conolly

Director, Rural and Regional Statistics

We aim to...

- *understand regional data needs* across all levels of government and communities
- deliver improved *access to regional data*
- develop better *core regional data sets*

..... so as to support evidence based regional planning and decision making

Need for “core” regional data

- Recurring themes:-
 - Population size and migration
 - Regional economy and labour market
 - Land use, services and infrastructure
 - Environment (water, energy, waste)
 - Locational disadvantage
- Profiling communities using ‘indicators’

Population

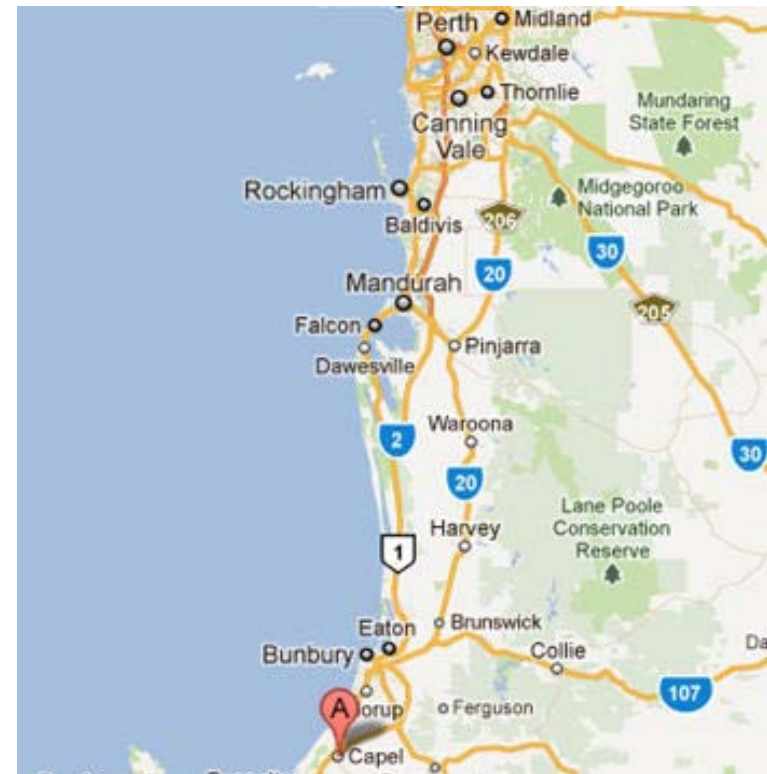
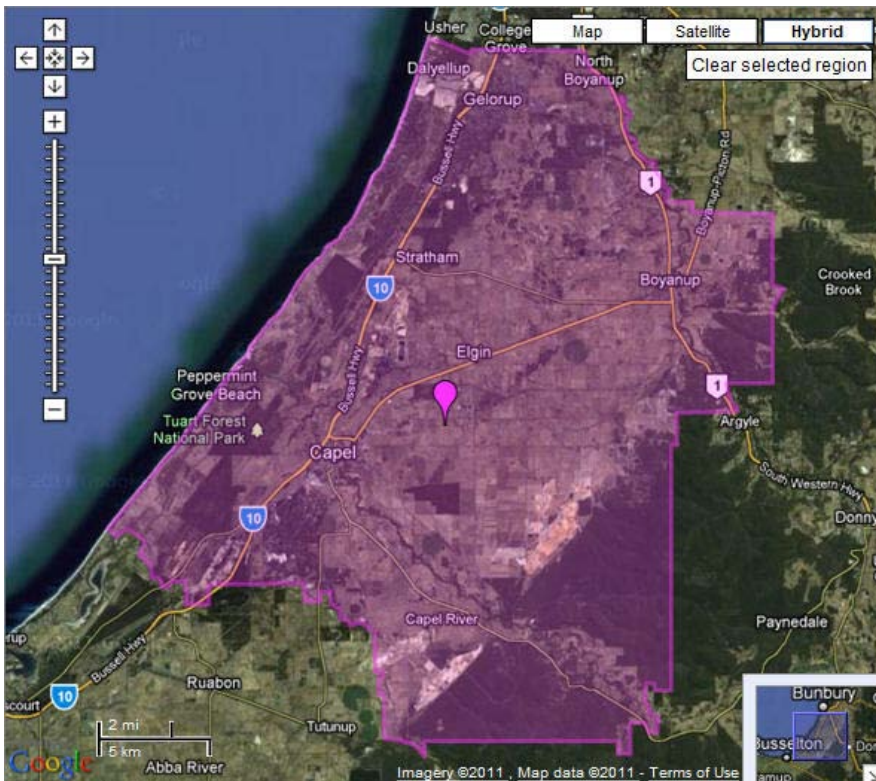
What we know for regions

- Annual population size by age and sex
- Inter-census moves (every five years)

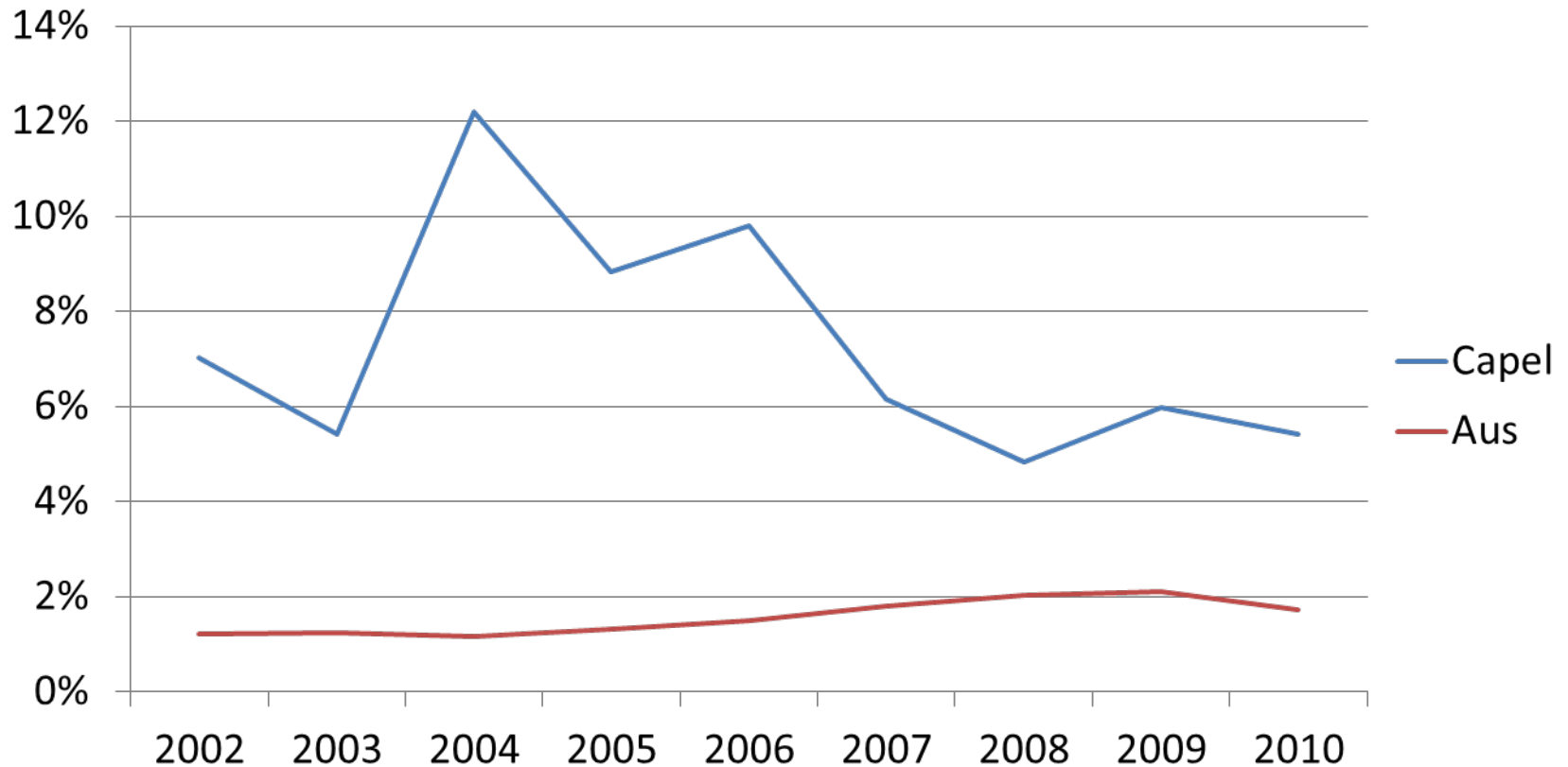
We know less about . . .

- Population turnover annually
- Reasons for moves
- Regional population projections
- Regional distribution of new arrivals to Australia

Capel LGA, WA

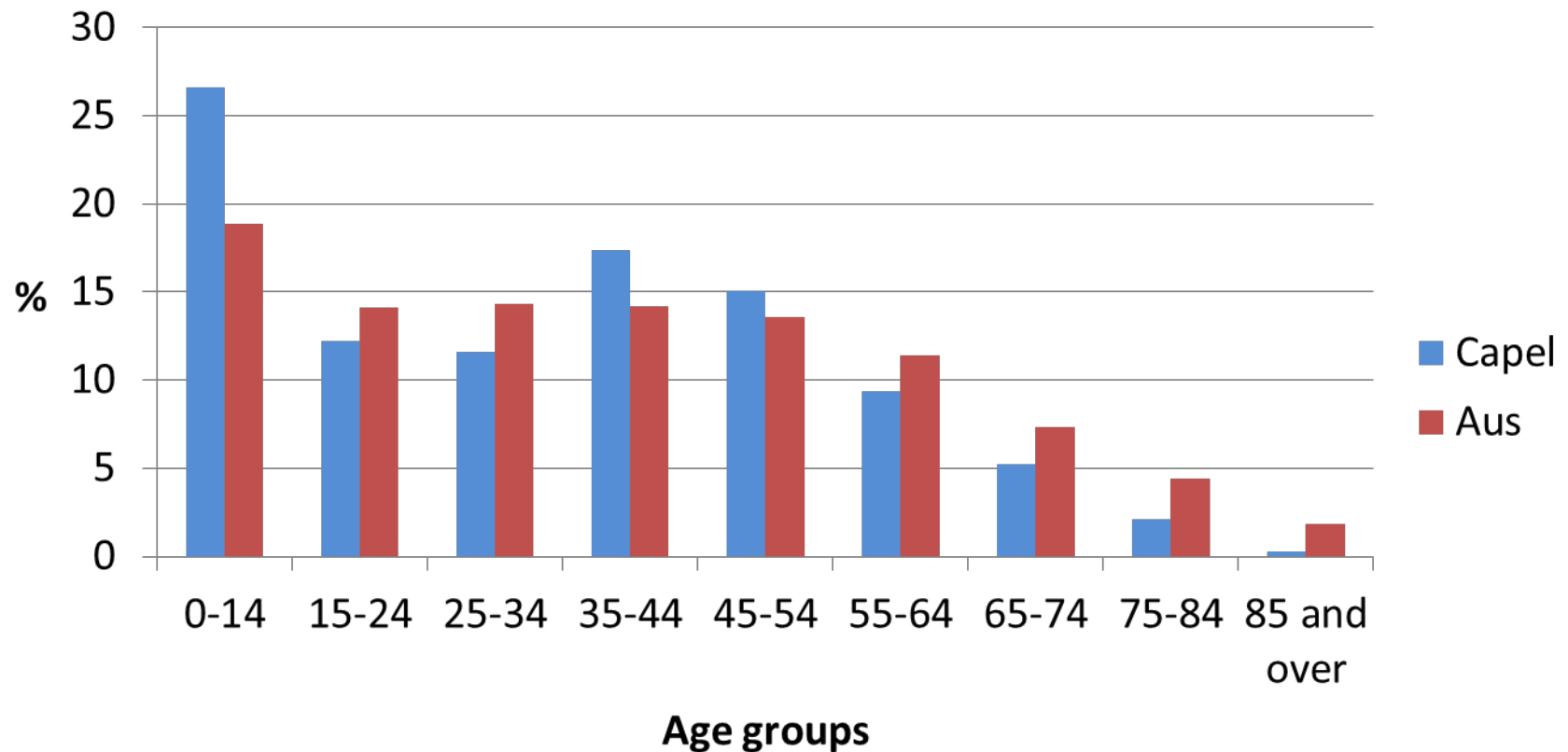


Population - Annual Percentage Growth



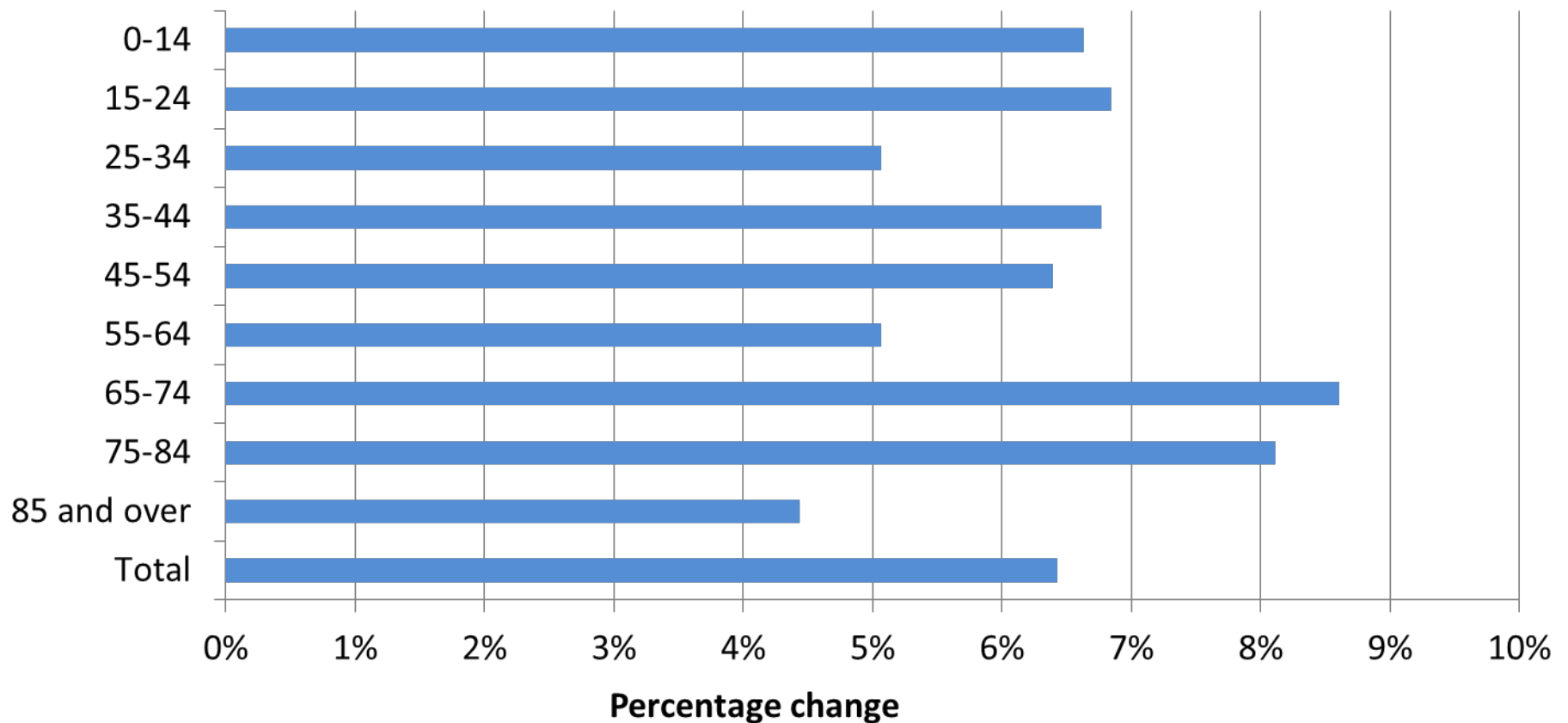
ABS; 3218.0 – Regional Population Growth, Australia, 2009-10

Age groups, percentage of total population - 2010



ABS; 3235.0 – Population by Age and Sex, Regions of Australia, 2010

Average Annual Growth by Age Groups, Capel (S) LGA WA – 2005-2010



ABS; 3235.0 – Population by Age and Sex, Regions of Australia, 2010

Population Turnover

- This can be calculated as:

Arrivals + Departures (2001 to 2006)

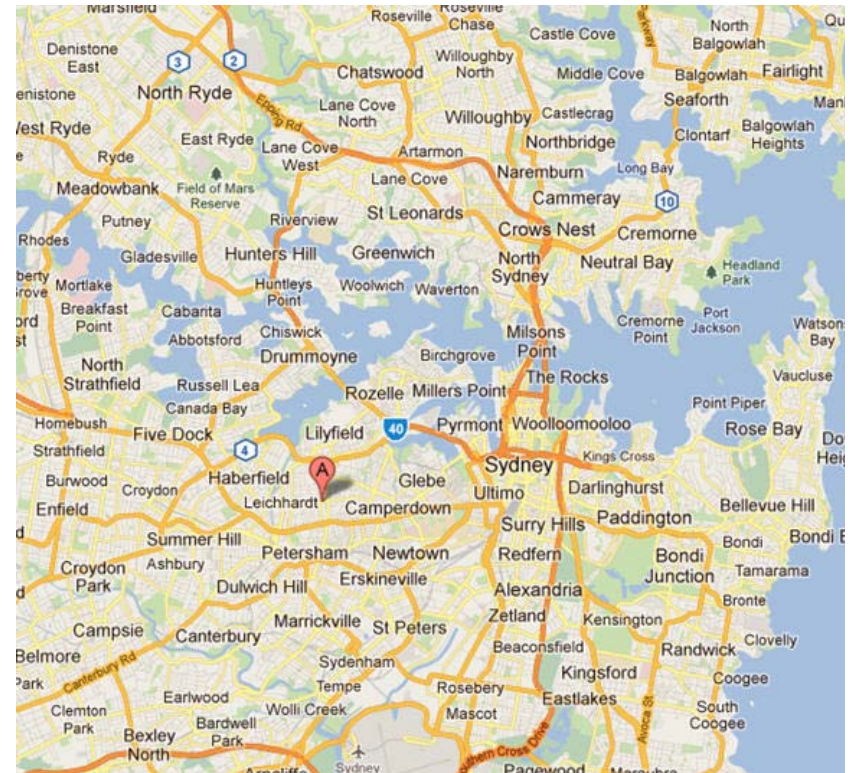
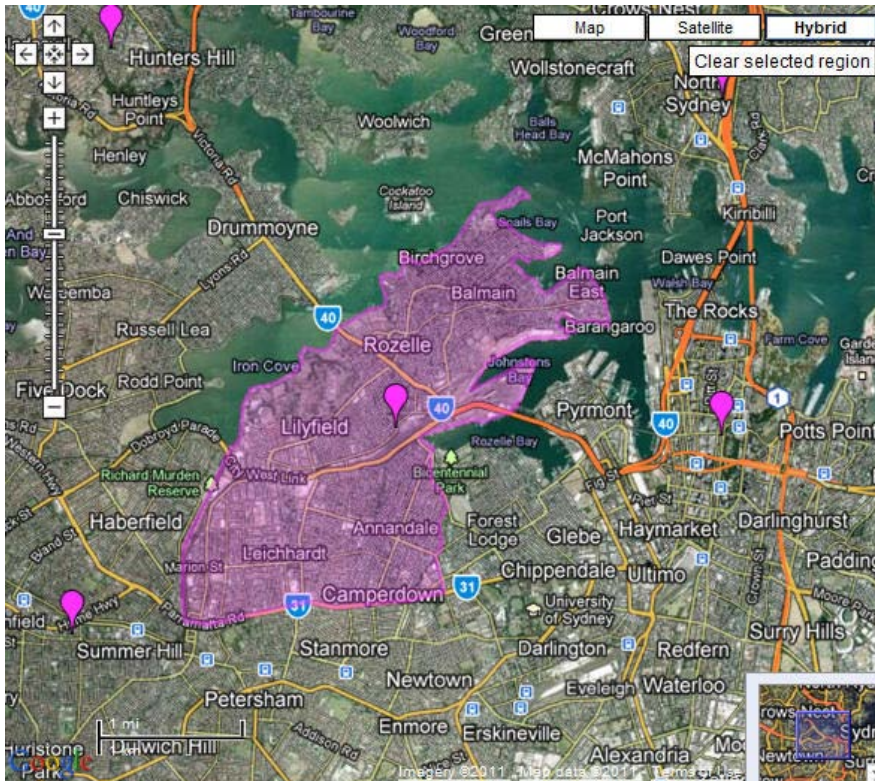
Population (2006)

- Uses Census data on where people lived in 2006 and where they lived 5 years ago

Population turnover of LGAs

- At LGA level turnover ranged from 7.5% to 145.5% across Australia
- Lowest turnover in Australian Aboriginal communities in NT
- Highest turnover in mining communities—Jabiru (in the NT), and Leonora, Meekatharra, Ashburton all in WA.

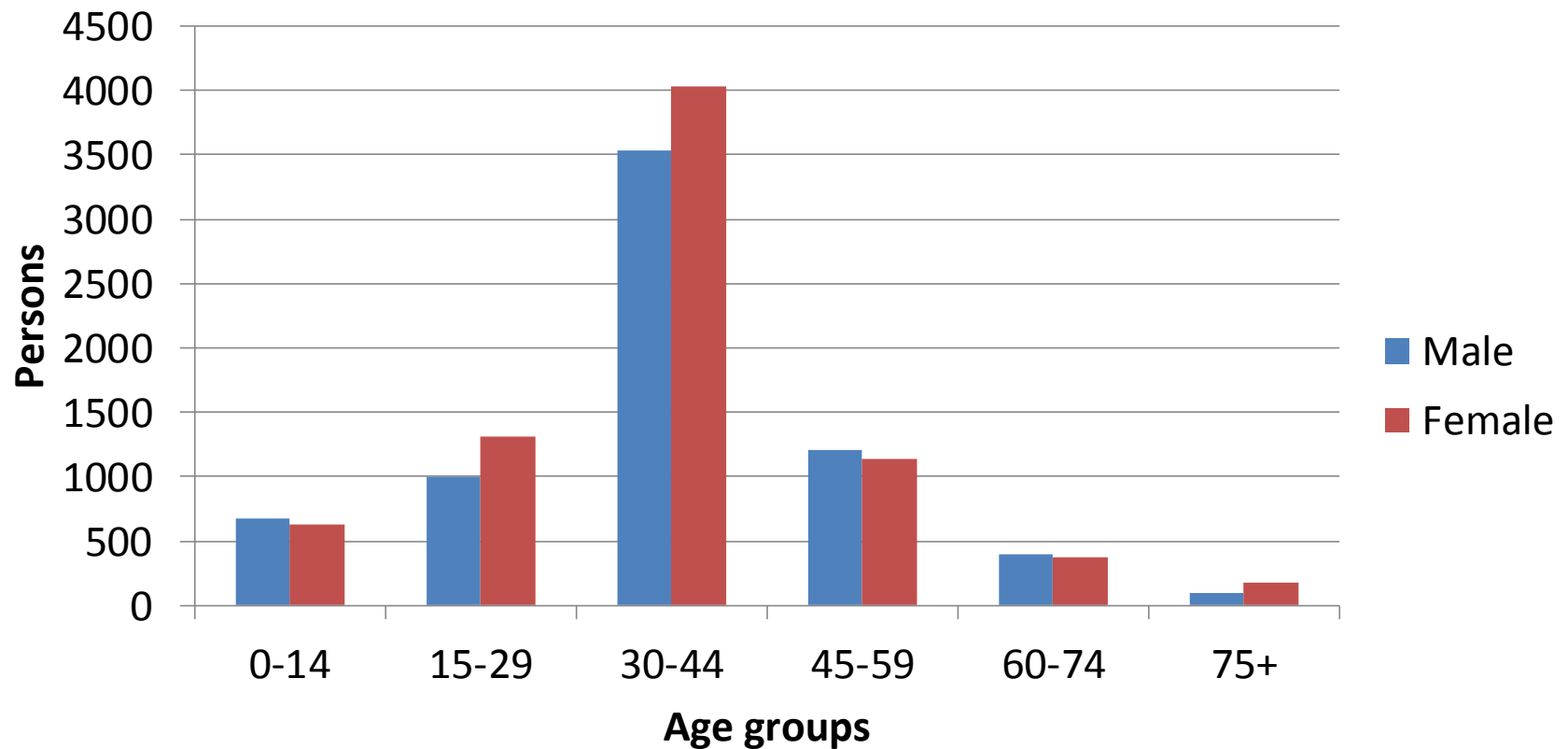
Leichhardt LGA, NSW



Population turnover in Leichhardt

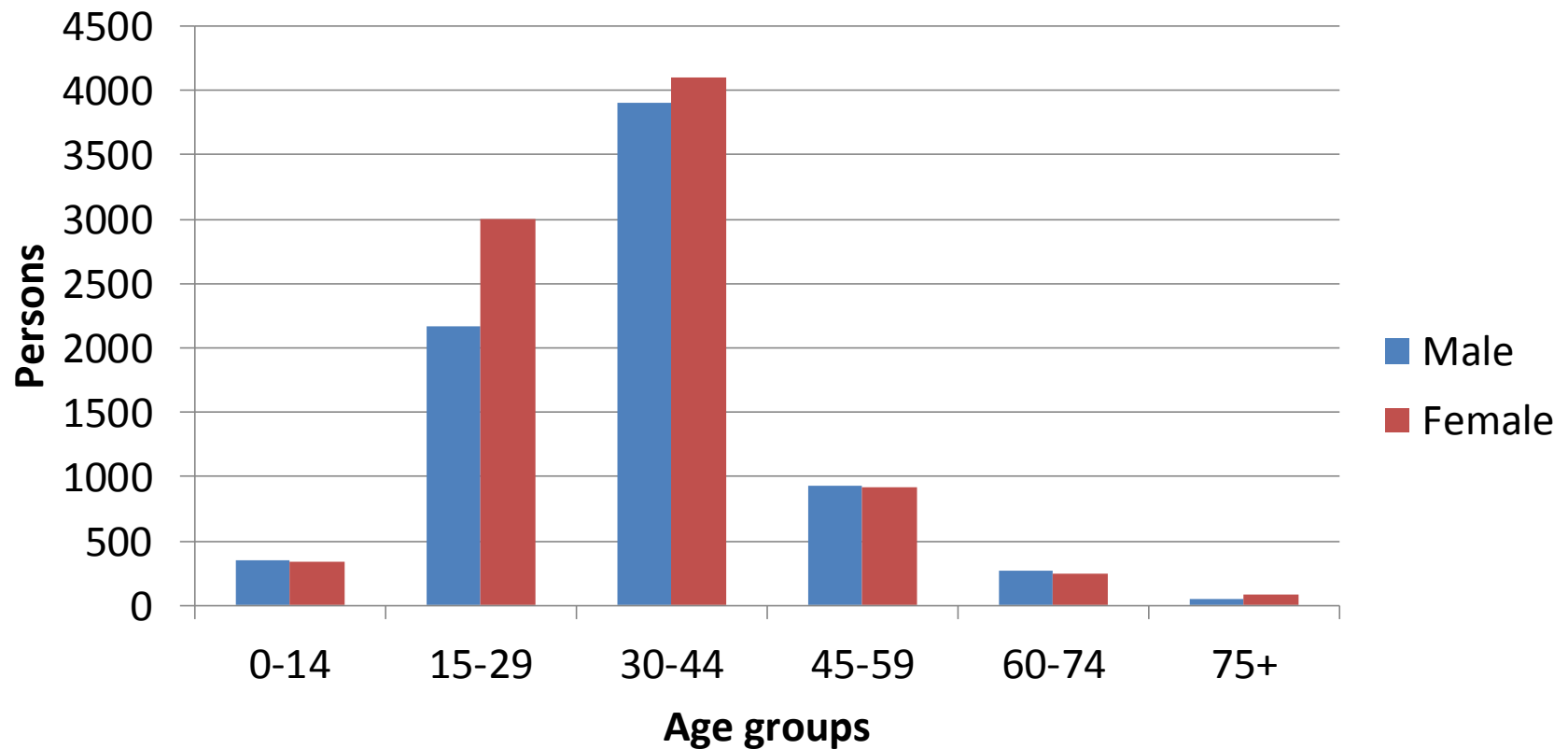
- **Population turnover** between 2001 and 2006 was **75.2%**
- 16 335 arrivals, 14 563 departures
- Estimated Resident Population in 2010 was 55,596
- Average Annual **Growth Rate** from 2005-2010 was **0.26%**

Departures, Leichhardt LGA, 2001 - 2006



ABS; 2006 Census of Population and Housing

Arrivals, Leichhardt LGA, 2001 - 2006



ABS; 2006 Census of Population and Housing

National Regional Profile: Leichhardt (A) (Local Government Area)

LATEST ISSUE Released at 11:30 AM (CANBERRA TIME) 04/11/2011 CLASSIFICATIONS CODE: LGA14800

		2006	2007	2008	2009	2010
ESTIMATES OF UNEMPLOYMENT - June quarter						
Unemployed persons	no.	978	902	660	1 097	1 054
Unemployment rate	%	2.7	2.6	1.8	2.7	2.6
ESTIMATES OF PERSONAL INCOME * - year ended 30 June						
Average Wage and salary income	\$	64 866	68 703	70 968	73 858	-
Average Own unincorporated business income	\$	30 483	33 391	33 202	34 621	-
Average Investment Income	\$	8 762	10 078	10 258	10 885	-
Average Superannuation and annuity income	\$	32 404	36 344	28 249	28 222	-
Average other income (excl. Government pensions & allowances)	\$	7 568	8 254	6 934	6 687	-
Total income (excl. Government pensions & allowances)	\$m	2 157.9	2 354.7	2 629.5	2 579.1	-
SELECTED GOVERNMENT PENSIONS & ALLOWANCES - at 30 June						
Age Pension - Centrelink	no.	3 278	3 204	3 228	3 262	3 264
Age Pension - DVA	no.	7	7	7	np	np
Carers Payment	no.	102	101	120	130	169
Disability Support Pension	no.	1 195	1 189	1 191	1 218	1 299
Newstart Allowance	no.	724	696	605	908	904
Newstart Allowance - more than 365 days	%	55.0	56.5	55.2	41.5	55.6
Parenting Payment - Single	no.	438	409	345	317	319
Youth Allowances	no.	545	534	555	np	605

Regional economies

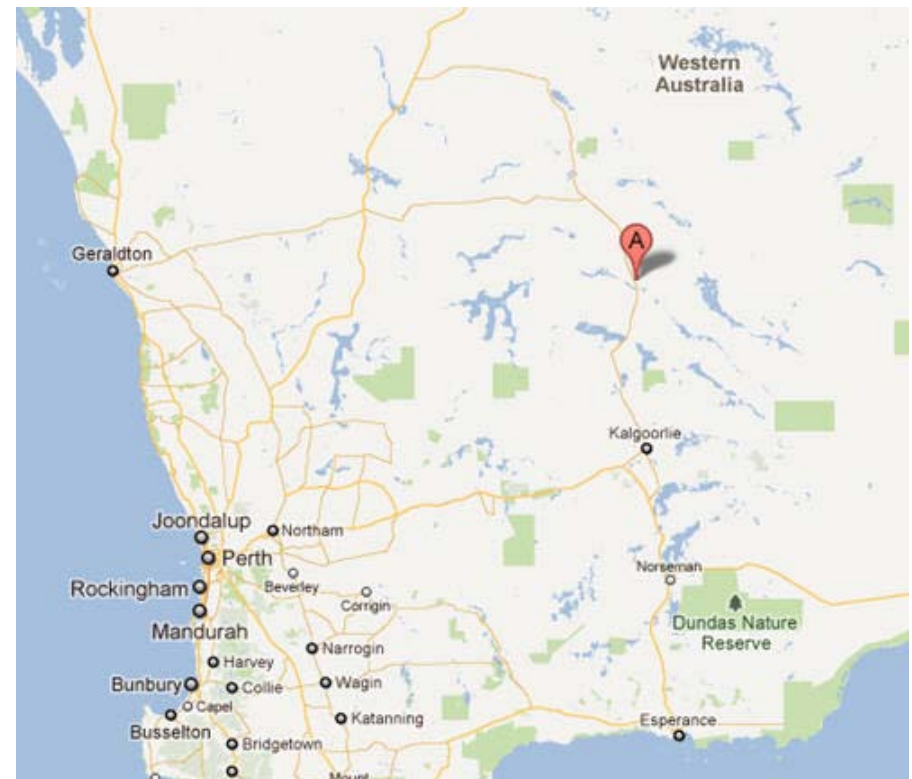
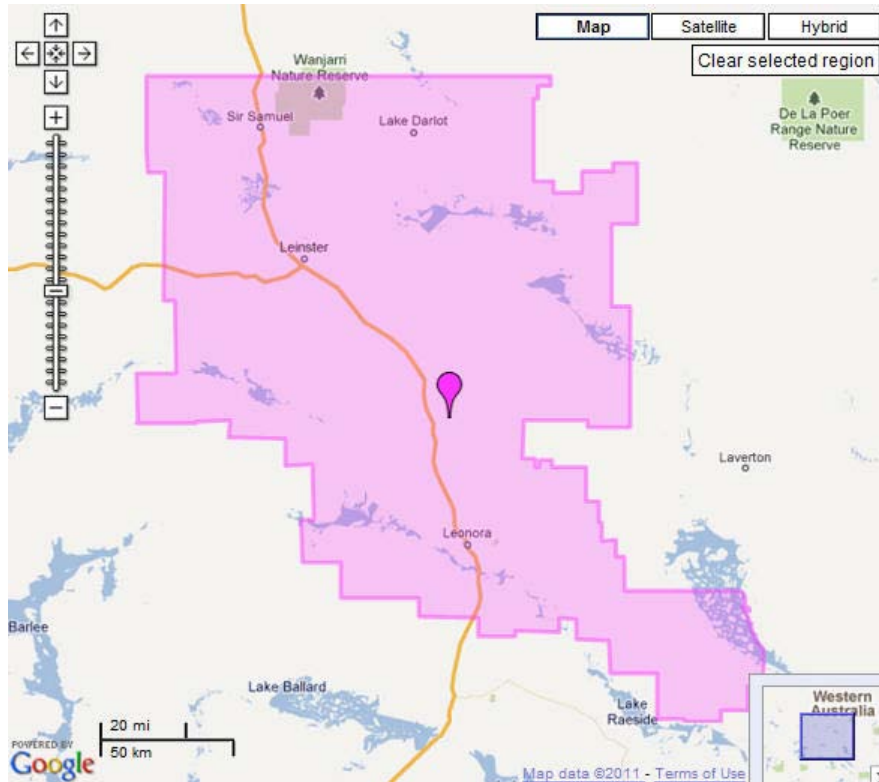
What we know

- Some labour market characteristics
- Counts of businesses
- Personal income / Household income
- Commuter patterns from Census data

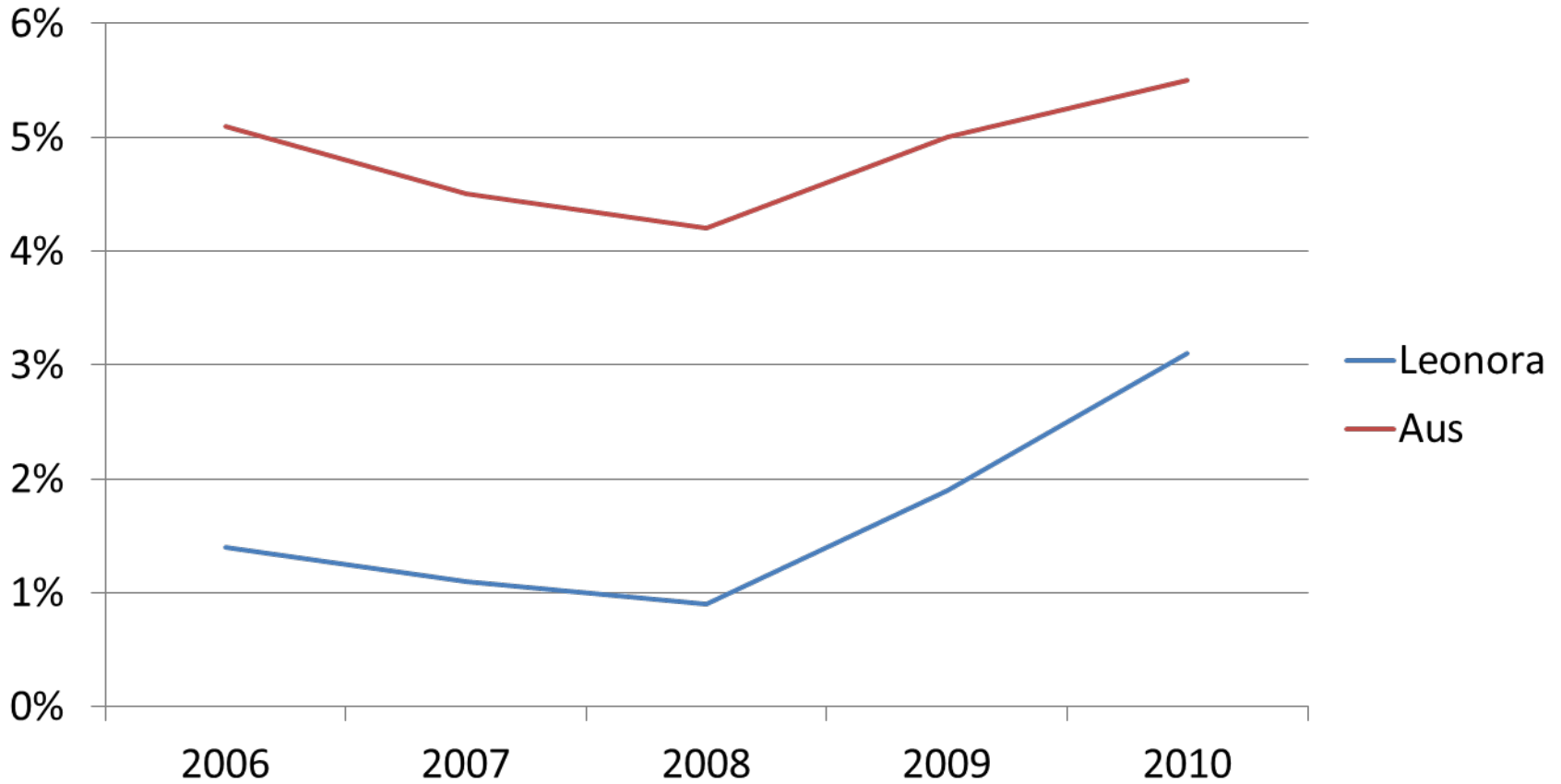
We know less about...

- Value of production (apart from Agriculture)
- Business dependencies and markets
- Business performance
- Personal or household wealth

Leonora LGA, WA

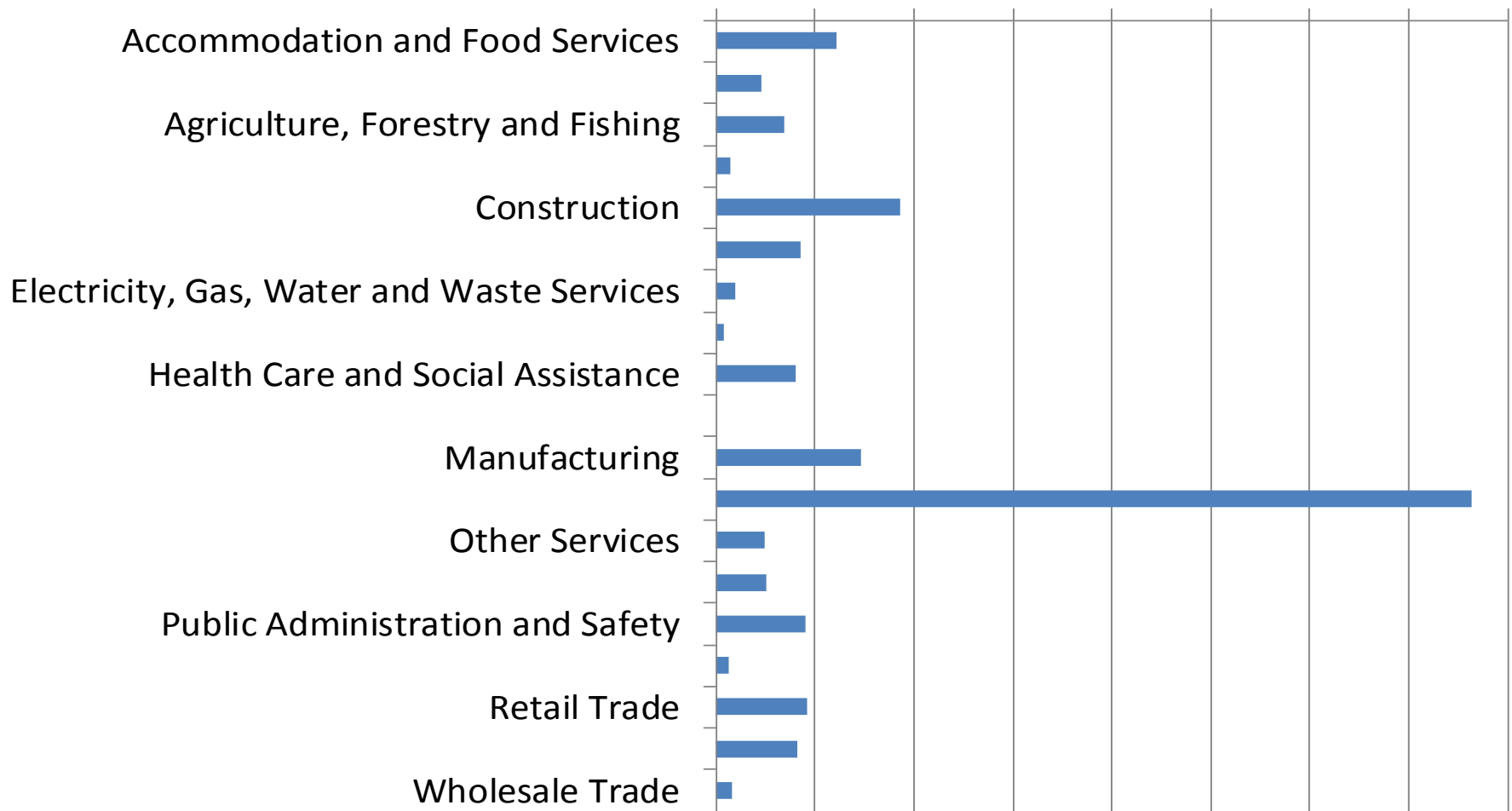


Unemployment Rate

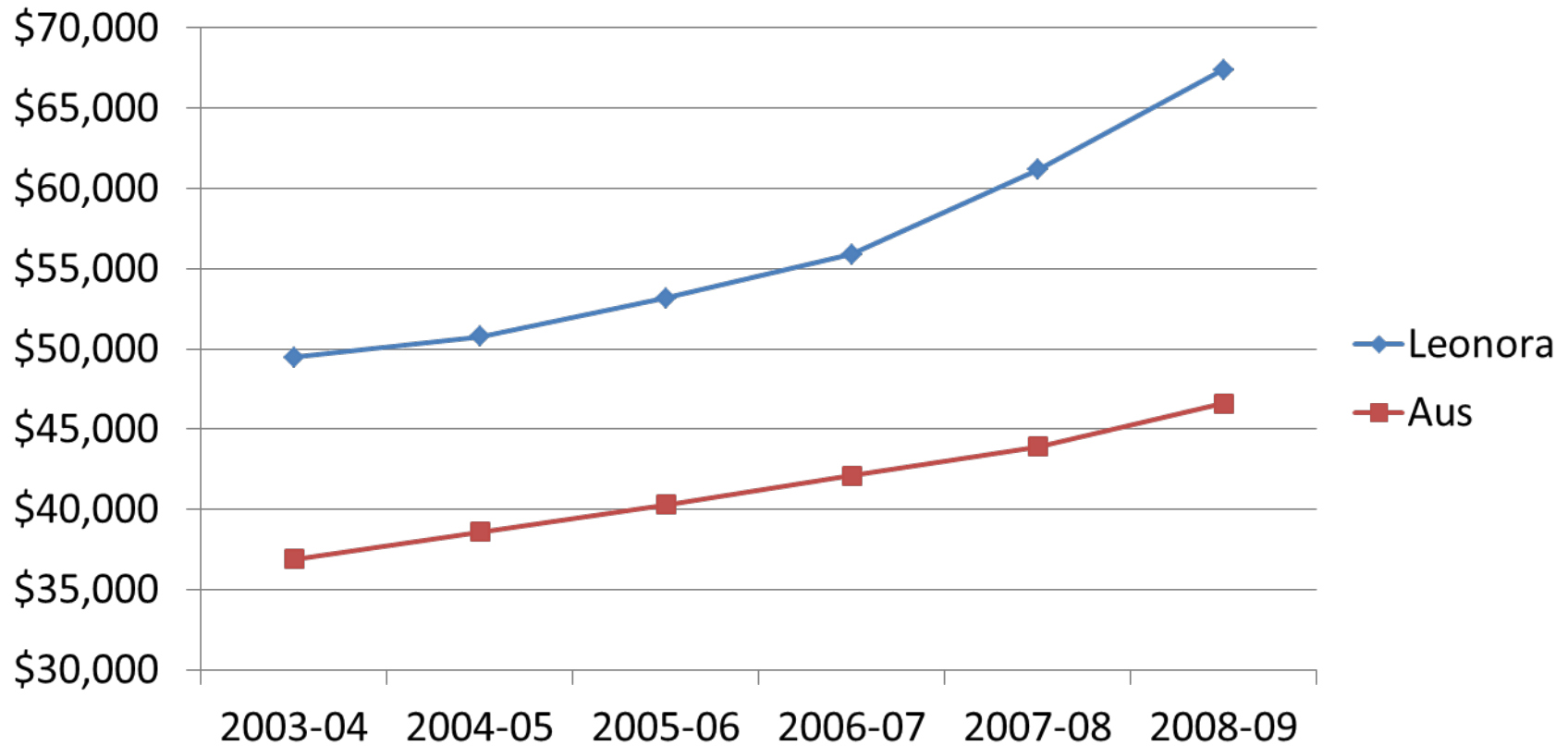


DEEWR; Small Area Labour Markets, Australia, 2010

Industry of Employment, Leonora LGA - 2006



Average Annual Income



ATO; Individual Income Tax Return Database



ECONOMY

Leichhardt Counts of Businesses

		2005	2006	2007
COUNTS OF BUSINESSES, INCLUDING ENTRIES AND EXITS				
Number of Businesses - at 30 June				
Non-employing businesses	no.	3 966	3 945	3 975
Employing businesses: 1 to 4 employees	no.	1 962	2 100	2 214
Employing businesses: 5 or more employees	no.	1 095	1 062	1 077
Total businesses	no.	7 023	7 107	7 266
Business Entries - year ended 30 June				
Non-employing business entries	no.	798	774	804
Employing business entries	no.	411	396	384
Total business entries	no.	1 209	1 170	1 188
Business Exits - year ended 30 June				
Non-employing business exits	no.	1 077	777	759
Employing business exits	no.	78	309	273
Total business exits	no.	1 155	1 086	1 032

Profiling regions

- Bringing regional data together allows ‘story telling’
- Key sources are ABS National Regional Profile and Census
- Statistical information is a stepping off point to define local research questions and conduct local research

National Regional Profile

The screenshot shows the Australian Bureau of Statistics website. The main navigation bar includes links for Home, First Visit?, Statistics, Services, Census, Topics @ a Glance, Methods & Standards, News & Media, Education, Links, and Help. A search bar is located on the right. The left sidebar contains a menu with categories: All Statistics, National Statistics, and Regional Statistics. The 'Regional Statistics' category is highlighted with a red arrow, and the 'National Regional Profile' item within it is circled in red. The main content area features a 'Spotlight on ...' section with a headline about CPI review outcomes, a 'Product Releases' section with a release from Monday 6 December 2010, and a 'Media Releases' section with several news items. On the right, there is a 'AUSTRALIAN POPULATION CLOCK' showing 22,547,586 and a 'BetaWorks' logo.

Australian Bureau of Statistics

Home First Visit? Statistics Services Census Topics @ a Glance Methods & Standards News & Media Education Links Help

search

All Statistics

Statistics

Understanding Statistics

National Statistics

Australia's Population

Key National Indicators

Census Data

Consumer Price Index

Labour Force

National Accounts

Regional Statistics

Selected information with a regional focus

National Regional Profile

Key Products

Australian Social Trends

Measures of Australia's Progress

All Headlines Labour Force: Employment increased 29,700 persons to 11,355,900 in October 2010 (s)

Spotlight on ...

CPI REVIEW Outcomes

ABS announces changes to the CPI

Outcomes from a comprehensive review of the Consumer Price Index (CPI) are now available. This was the first major review of the CPI in over a decade, undertaken in consultation with a broad cross section of the Australian community. [Find out more](#)

Product Releases Previous | Upcoming | All Updates
ABS Release Calendar
Main Economic Indicators

Media Releases View All
Subscribe

Releases for Monday 6 December 2010 at 11.30am (Canberra time)

02/12/2010 ABS challenges students to design Australia's data future

02/12/2010 More water-saving devices in high-income households

02/12/2010 Retail Trade down 1.1% in October 2010 (seasonally adjusted)

02/12/2010 Presents key social and economic indicators, feature articles, news and information about the ACT and region - In **fACT - Statistical Information on the ACT and Region** (cat. no. 1308.8) View the [Media Release](#)

Growth continued for short-term visitor arrivals (Trend)

AUSTRALIAN POPULATION CLOCK
22,547,586
1 new person: 1 min 18 sec
[How does this work?](#)

BetaWorks
where ideas grow

View All Pause Play

Topics @ a Glance

Topics @ a Glance provides access to key statistics about a range of ABS topics.

Please note: We are currently releasing the new Topics @ a Glance project. This project will be replacing the existing Themes exciting and dynamic pages. Until this work is completed some pages may still display the title 'Themes'. We apologise for any inconvenience this may cause.

All Topics
Economy
People
Environment & Energy
Industry
Regional
Quick Links
Population Clock
Statistics
Key National Indicators
Services we provide to small business
Understanding Statistics

Economy

- [Business Indicators](#)
- [Balance of Payments](#)
- [Business Demography](#)
- [Finance](#)
- [Foreign Investment and Foreign Debt](#)
- [Foreign Trade](#)
- [Government Finance Statistics](#)
- [National Accounts](#)
- [Prices](#)

People

- [Aboriginal and Torres Strait Islander Peoples](#)
- [Ageing](#)
- [Census](#)
- [Children and Youth](#)
- [Crime and Justice](#)
- [Culture and Recreation](#)
- [Demography](#)
- [Disability and Carers](#)
- [Education and Training Statistics](#)
- [Family and Community Statistics](#)
- [Gender](#)
- [Health](#)
- [Housing](#)
- [Labour](#)
- [Migrant & Ethnicity](#)
- [Mortality](#)
- [Personal, Family and Household Finances](#)
- [Social Capital](#)

Environment & Energy

- [Environment and Energy](#)

Industry

- [Agriculture](#)
- [Construction](#)
- [Innovation, Science & Technology](#)
- [Manufacturing Statistics](#)
- [Mining](#)
- [Retail](#)
- [Service Industries Statistics](#)
- [Tourism](#)
- [Transport](#)

Regional

- [Regional Statistics](#)
- [New South Wales](#)
- [Victoria](#)
- [Queensland](#)
- [South Australia](#)
- [Western Australia](#)
- [Tasmania](#)
- [Northern Territory](#)
- [Australian Capital Territory](#)

ABS Services to Local Government

Australian Bureau of Statistics

★ Rate the ABS website

First Visit? Statistics Services Census Topics @ a Glance Methods & Standards News & Media Education Links Help

search

Local Government



ABS clients in the Local Government sector include individual councils, groups of councils, and Local Government Associations. This page is aimed at assisting these clients to find information required for planning and delivering services to their communities.



[Finding data for Local Government Areas](#)

The ABS has a range of data for Local Government Areas, including Census data and various demographic publications.



[Helping you use data](#)

The ABS provides training and other services and resources to help you use data.



[Keeping you informed](#)

Keep up to date with the latest ABS releases and information.



[Finding data for States/Territories](#)

The ABS also produces a large range of Social and Economic data at State/Territory level.



[How the ABS uses your data](#)

Where does the data you supply to the ABS end up?



[Helpful Links for Local Government Organisations](#)

This page provides links to other government websites.

Find Local Government data on the ABS Web Site . .

Looking for Data for Your Local Government Area?

Q: How many young people are in my area? How many older Australians?

A: 'Population by Age and Sex, Regions of Australia' (cat. no. 3235.0) contains the population for local government areas in age groups.



Click on the text in the speech bubble to go to the data relevant to the questions in the image above.

Regional data for local government

... please talk to us !

Thankyou

rrsnc@abs.gov.au

lisa.conolly@abs.gov.au

08 8237 7402

