



## **National Roundtable on Rural-Remote and Indigenous Local Government**

**Australian National University**

**29 and 30 July 2010**

### **Background to ACELG**

- PM announced funding support for a Centre of Excellence at the Australian Council of Local Government (ACLG) meeting in November 2008
- It is a consortium of universities and professional institutes
- Not a university research institute
- Not a representative body or professional institute
- Not part of the Federal Government: independent board

## Consortium Partners



UTS Centre for Local Government



Institute of Public Works Engineering Australia



University of Canberra



Local Government Managers Australia



Australia and New Zealand School of Government



Program Partners:

- ECU
- CDU
- ANU

## Overview

- \$8m Federal endowment for a minimum five-year operations
- Funding agreement with UTS
- Inaugural Board meeting held 1 October 2009
- Official launch by Minister Albanese on 14 December 2009
- Project plan finalised, endorsed by the Board and launched by Minister in December 2009 (as required under finding agreement)
- Initial consultations with state associations, professional institutes and State Government departments of local government late 2009
- Further consultations/involvement/communication now underway
- Will not duplicate or compete with existing local government programs
- Will focus on adding value, filling gaps and seeding new initiatives
- Given limited resources, the Centre must focus on a limited number of strategic interventions.

## ACELG Board



Hon Margaret Reynolds  
Chairperson



Mr John Truman  
IPWEA National



Prof Atilla Brungs  
UTS



Ms Penny Holloway  
IPWEA National



Prof John H Howard  
University of Canberra



Ms Stephanie Foster  
DITRDG

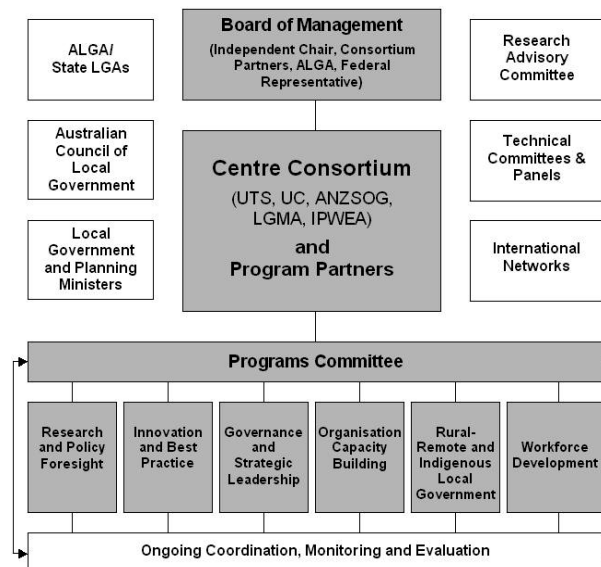


Mr Peter Allen  
ANZSOG



Cr Geoff Lake  
ALGA

## Governance and program framework



## **Six ACELG Programs**

1. Research and policy foresight
2. Innovation and best practice
3. Governance and strategic leadership
4. Organisation and capacity building
5. Rural-remote and Indigenous local government
6. Workforce development

## **Rural-remote and Indigenous Local Government**

- Focus is on the needs of remote/rural local governments some of which have significant Indigenous populations
- Also Queensland Indigenous councils
- Need to understand needs and challenges and develop appropriate responses
- Either new initiatives, complement existing initiatives, disseminate good practice, how to integrate with other ACELG programs, what actions others can take
- Learn from the past - what worked, what didn't

## **Four scoping studies**

- Northern Territory (CDU - Ian Thynne)
- Western Australia (ECU - Robyn Morris)
- Queensland Indigenous Councils (Michael Limerick)
- Non-amalgamated Queensland Councils (LGAQ - Alan Morton)

## **Purpose of the Roundtable**

- Hear about the findings of the scoping studies
- Identify key themes
- Do the findings also apply to other jurisdictions (South Australia and New South Wales in particular)?
- Development of a strategy for ACELG's Rural-remote and Indigenous Local Government program

## **Roundtable format**

### *Remainder of today:*

- Presentation of key themes from the scoping studies
- Introductions
- Participant perspectives and expectations.

### *Tomorrow:*

- Presentations by scoping study authors
- Roundtable discussion on findings
- Workshops - actions and strategies for ACELG
- Summary of outcomes .

## **Key themes from the scoping studies**

- Expectations/role of RRI LG; concept of 'mainstreaming'
- General governance - councillor capacity/community engagement
- Economic development; community building
- Workforce development - recruitment/retention; CEOs
- New approaches to training, peer support, mentoring, networking
- Support services; sharing best practice resources
- Compliance burden and withdrawal of services
- Structural reform; regional collaboration; IGR
- Financial sustainability; finance/asset management
- Systems for HR, financial management, IT

## **Over to you...**

- Introductions
- Perspectives
- Expectations

## **Roundtable - Friday 30 July**

- Scoping study presentations
- Discussion
- Worksop session

## **Workshops**

- Scoping study themes
- Actions and strategies for ACELG to pursue:
  - Integration with other ACELG programs
  - Seeding of new initiatives
  - Dissemination of good practices resources
  - Other strategies
- Actions for others